

Ladis



Product Catalogue



Paradis

Le son, L'émotion

Ladis Table of contents

I : Preamble

II : Intégrated amplifiers 4

-Orchestra	5
-DA50s/RC	6
-DA88s	7
-I88	8
-I35	9
-I50	10

III: Power amplifiers 11

-PA100	12
-JA15	13
-JA30 MkII	14
-JA80 MkII	15
-JA120	16
-JA200 MkII	17
-JA500	18
-SE300B	19
-SE845	20
-SE845NEC	21

IV : Preamplifiers 22

-Pre1	23
-DPMC MkII	24
-JP15	25
-JP80MC	26
-JP200MC	27
-JP500	28
-JPL	29
-JPS2	30
-JPS3	31

V : Sources 32

-Thalie	33
-Calliope	34
-Orphée	35
-JS1MKIV	36
-JS2MKIII	37



Jadis

Few words about Jadis

Everything started during the early 80s when two men were spending their free time designing and building audio gear that would reproduce the music they love in the best possible way. At first, their amplifiers were distributed to their close friends but regarding the excellent capacities of these units, and the enthusiastic feedback from the audiophile community, the two men decided to create a company in order to design and manufacture audio gear on a larger scale.

This is how Jadis was born in 1983. During the first years of its existence, Jadis' gears were built by the two friends, but due to an increasing demand, the company had to train its own technicians. Nowadays, the building technique remains the same as it was back in 1983: everything is extremely carefully handcrafted in Villedubert (Southern France). Every part of a Jadis gear is selected in order to reach one goal which is the best audio reproduction.

In the early 80s the tube was more and more abandoned by the audio industry. However the two Jadis' fathers were convinced that the tube remained the best option over the transistor in order to get a better musical reproduction. The tube is much harder to implement than a transistor, nevertheless, it will reward the efforts made regarding schematic design, strict component selection and the quality of the transformers. Every part that constitutes a Jadis has been conscientiously selected after long hours of listening in order to reach the best possible audio reproduction.

A Jadis gear is first of all, a unit that was built without compromise. A good example is the Jadis output transformers. As the famous idiom says: "If you want it done right, you've got to do it yourself". This is why they are still designed and handcrafted in Villedubert to match Jadis' quality criteria.

All these elements explain why a Jadis gear is free from any sound coloration that is often reproached to the tube amplifiers. The position of the singer and the instruments is clearly and easily identifiable, timbres are perfectly transcribed leaving the listener the pleasure to enjoy all the subtleties of each instrument.



What does make a great sounding tube amplifier ?

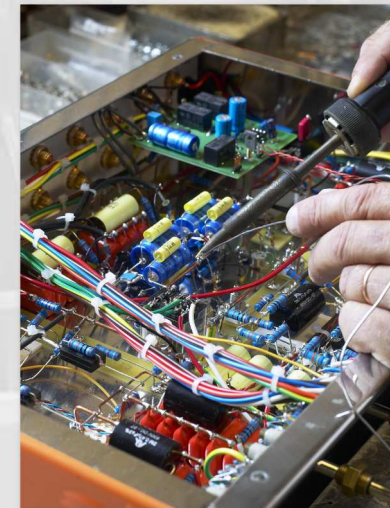
All around the world, music lovers agree that the transformer is a tremendous component which have a great impact on the final restitution of the audio signal. Jadis has been making its own transformers for about 30 years using a specific and unique process allowing Jadis devices to drive easily any kind of speakers. we also cast every single transformer into a special resin, ensuring maximum sealing and thermal stability.



Last but not least, the tubes selection. We always choose conscientiously the tubes that will be mounted on Jadis devices. Each tube is fully tested according to a very strict process. First of all, the tube is burned in for more than 120 hours to see if there is any issue. If one shows any kind of imperfection, it is simply taken away from the assembly line. Secondly, each tube is measured and paired. This means that when you get your Jadis unit, it will give you its full potential.



If you look inside a Jadis device, you will find that all our components are hard-wired and linked with solid copper bars, this type of assembly is better for several reasons. Indeed, a printed circuit board will bring resistive and capacitive phenomenon which threaten the quality of the musical signal. Moreover, we, at Jadis use silvered solder when soldering the components for better conductivity; always in order to preserve the fragile audio signal.



All these elements together allow Jadis devices to give you the best you could hear...

Fuchs

Integrated amplifiers



Jadis Orchestra

Specification

Type	Stereo integrated amplifier with optional remote control
Bias	Manual
Bandwidth @-3dB	5Hz to 60kHz
Load impedance	1 to 16 Ω
Input impedance	>100K Ω
Power output	40W class-B
Sensitivity	250mV
Tubes	4 x KT88/KT90/KT120/6550, 2 x ECC83
Dimensions	53x27x20 cm
Consumption	300W
Weight	20 kg

Description

The Orchestra displays stainless steel chassis with tubes mounted on ceramic sockets with golden pins. It has 4 power tubes mounted in push-pull which are driven by 2 ECC83.

This unit is the result of a very thorough study undertaken by Jadis with one main objective: to make a product with all the essential qualities of a high-end device at a reasonable price.

The "REFERENCE" version provides a golden finish for front plate, better transformers' casing with golden top plates. Tone controls can also be added on demand.

Listening

This is one of those amplifiers that offer fantastic sound no matter what you play. [...] It gives you a perfect sense of space, openness and airiness and a very dynamic sound. You will hear every single note as clearly as possible. When listening to your favorite music with this amp, you truly experience it as if you were witnessing a live performance...

"NoiseAddicts" : Jadis Amplifiers: Delicate Warmth of France



Jadis DA50S/RC

Specification

Type	Integrated stereo amplifier with optional remote control
Bias	Autobias
Input, output	5 line input, 2 speaker output (for bi-wiring)
Bandwidth @-3dB	20Hz to 35kHz
Load impedance	1 to 16 Ω
Input impedance	>100K Ω
Power output	30W pure class-A
Sensitivity	100mV
Tubes	4 x KT88/KT90/KT120/6550, 2 x ECC83, 3 x ECC82
Dimensions	53x27x20 cm
Consumption	275W
Weight	25 kg

Description

The Jadis DA50 Signature is a new generation of integrated amplifiers from Jadis Electronics. It is definitely a big upgrade to Jadis Orchestra in every way. Its chassis is surgical stainless steel, looking aesthetically pleasing and is hard-wearing, guaranteeing the permanence of the amplifier.

Listening

The sound of the Jadis DA50 Signature is lush, fleshed-out, organic and very musical. It is also rich in detail, liquidity, and has an overall more relaxed presentation that many audiophile equate with.



Jadis DA88S

Specification

Type	Integrated stereo amplifier with optional remote control
Bias	Autobias
Input, output	5 line input, 2 speaker output (for bi-wiring)
Bandwidth @-3dB	10Hz to 29kHz
Load impedance	1 to 16 Ω
Input impedance	>100K Ω
Power output	60W pure class-A
Sensitivity	120mV
Tubes	8 x KT88/KT90/KT120/6550, 2 x ECC83, 3 x ECC82
Dimensions	50x40x22 cm
Consumption	360W
Weight	40 kg

Description

The DA88 uses twice more power tubes. It can accept KT88, KT90, KT120 but also 6550 and is able to supply twice more power than the DA50. This lovely amplifier is appreciated by many audiophiles all around the world. An optional remote control can also be added.

Listening

The Jadis has a beautiful tone color, a limpidity, a gracefulness, and tenderness. What makes the DA88S so distinctive is that it builds on these traditional strengths to offer an amplifier that is so palpably powerful, vivid and authoritative that listening to it can become an utterly engrossing experience. So it was for me.



Jadis 188

Specification

Type	Integrated stereo amplifier with optional remote control
Bias	Autobias
Input, output	5 line input, 1 USB input, 2 speaker output (for bi-wiring)
Bandwidth @-3dB	10Hz to 19kHz
Load impedance	1 to 16 Ω
Input impedance	>100K Ω
Power output	90W pure class-A
Sensitivity	190mV
Tubes	8 x KT150, 2 x ECC83, 3 x ECC82
Dimensions	50x40x22 cm
Consumption	400W
Weight	40 kg

Description

The I88 was specially designed to work with the new KT150 pentode tubes. It is a double push-pull giving 90W in pure classe-A. Integrating a digital input, it can be connected to a computer in order to enjoy digital music. For an more simplicity, the I88 comes with a remote control.

Listening

This amplifier combines outstanding power and dynamic with sweetness and delicacy. It will bring a breathtaking musicality to any speakers, even to the most complicated load.



Jadis I35

Specification

Type	Integrated stereo amplifier with optional remote control
Bias	Autobias
Input, output	5 line input, 2 speaker output (for bi-wiring)
Bandwidth @-3dB	20Hz to 20kHz
Load impedance	1 to 16 Ω
Input impedance	>100K Ω
Power output	30W pure class-A
Sensitivity	100mV
Tubes	4 x KT88/KT90/KT120/6550, 2 x ECC83, 3 x ECC82
Dimensions	50x33x22 cm
Consumption	275W
Weight	25 kg

Description

The Jadis I35 integrates both active preamplifier and amplifier which bring high musicality. A remote controller can be added on demand.

Listening

"The Jadis sounded magnificent... the I-35 delivered every bit of the presence, tone and texture that I would hope to hear from a contemporary tube amplifier: no small feat in itself. This is a damn good amp for getting to the essence of music."

- Art Dudley, *"Stereophile"*, January 2014
- *Stereophile* recommended component 2014



Jadis I50

Specification

Type	Integrated stereo amplifier with remote control
Bias	Autobias
Input, output	4 line input, 1 USB digital input 16/48 kHz, 2 speaker output (for bi-wiring)
Bandwidth @-3dB	20Hz to 20kHz
Load impedance	1 to 16 Ω
Input impedance	>100K Ω
Power output	50W pure class-A
Sensitivity	110mV
Tubes	4 x KT150, 2 x ECC83, 3 x ECC82
Dimensions	48.5x34.5x33 cm
Consumption	300W
Weight	32 kg

Description

The Jadis I50 was created following the release of the new KT150 power tubes. Indeed, these new tubes were really promising and Jadis couldn't miss the opportunity to create a unit using them. So is born the last Jadis integrated amplifier. Jadis' engineer team had to rethink the schematic and the output transformers in order to adapt to these new KT150. The efforts were worth it.

Listening

The Jadis I50 has the wherewithal to dispel myths while at the same time opening up real possibilities. It has the power to drive real speakers to real levels, and do so with a sense of control and confidence that's hard to dispute. It combines all that stereotypical tube amp limpidity with an ability to rock hard when required, complete with surging drums, clean crisp cymbals and snarly guitars. I think I may have just be the light - or it could just be the "amplification à lampes" coming on in my head?

"HiFiNews" March 2015



Fradis

Power amplifiers



Jadis Pa100

Specification

Type	Stereo power amplifier <i>(balanced or single-ended)</i>
Bias	Manual
Bandwidth @-3dB	20Hz to 50kHz
Power output @1kHz	150W class-AB
Sensitivity	700mV
Load impedance	1 to 16 Ω
Input impedance	>100K Ω
Number of block	1
Tubes	12 x KT88/KT90/KT120, 4 x ECC83, 2 x ECC82
Dimensions	49.5x56.5x21cm
Consumption	500W
Weight	55kg

Description

The new Jadis PA100 is a stereo power amplifier that uses 12 power tubes. It produces a total power output of 150W in AB class. At the first sight one can see that this power amplifier is definitely from the Jadis' line of products. Golden front plate, high quality chassis, point-to-point wiring, massive output and power transformers. As for all Jadis units the PA100 is handcrafted in Villedubert in the Languedoc area.

Listening

The listening of these electronics are to be remembered as one of the best we were given to listen to. Perhaps not as much defined as single stage configuration but still really close to it. On the other hand, it takes an uncontested advantage in terms of dynamic and power output. Extremely musical and vivid with an impressive tonal accuracy and punch. No need to focus to unscramble the message as it gets your attention by its communicative realism.

"Stereo Prestige et Image" December 2014



Jadis JA15

Specification

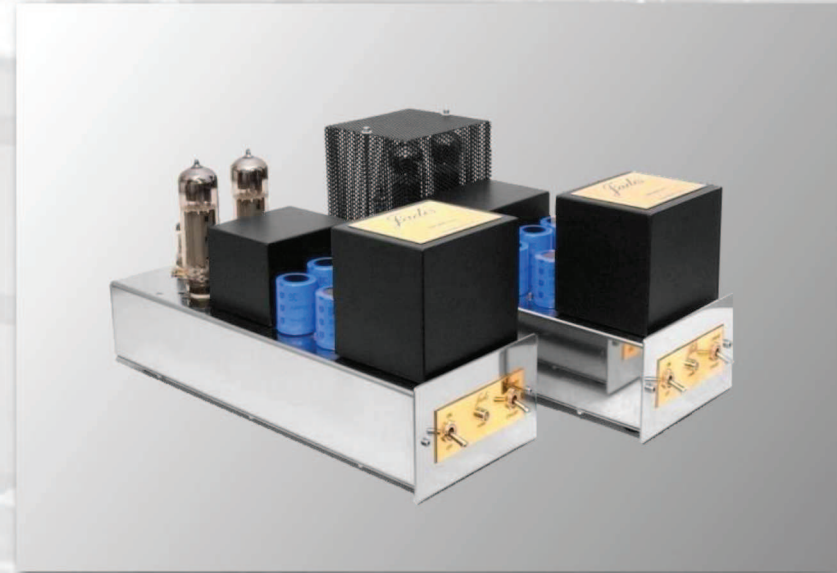
Type	Monoblock power amplifier
Bias	Manual
Bandwidth @-3dB	20Hz to 40kHz
Load impedance	4 to 8 Ω
Input impedance	>100K Ω
Power output	40W class-AB
Sensitivity	900mV
Number of block	2
Tubes	4 x KT88/KT90/KT120/6550, 2 x ECC83
Dimensions	48x15x20 cm
Consumption	110W
Weight	26 kg

Description

The monoblock amplifiers JA15 is designed around a push-pull circuit with ultra linear operation. It can deliver 40 watts in class AB. Six tubes (three per channel) are involved in signal amplification: 4 x KT90 as power tubes and 2 x ECC83 drivers. On this model the plates are made of varnished and screen printed brass.

Listening

Jadis JA15 delivers a sound with high reactivity and punch; moreover the bass range is also free off any heaviness despite its relatively contained power output. This piece of equipment handles any speaker with a sufficient efficiency. Thanks to the Jadis oversized transformers. Stereophonic imaging is also really clear as much in depth as in width. There is no doubt that these mono blocks procure a great listening pleasure.



Jadis JA30MkII

Specification

Type	Monoblock power amplifier
Bias	Autobias
Bandwidth	@30W @0dB 20Hz to 20kHz @15W @-3dB 15Hz to 60kHz
Load impedance	1 to 16 Ω
Power output	30W pure class-A up to 45W with KT150
THD @30W	0.6%
Input sensitivity	1V
Input impedance	>100K Ω
Number of block	2
Tubes	4 x KT150/KT88/KT90/KT120/6550, 2 x ECC83, 2 x ECC82
Dimensions	46x21x21 cm
Consumption	125W each
Weight	22kg each

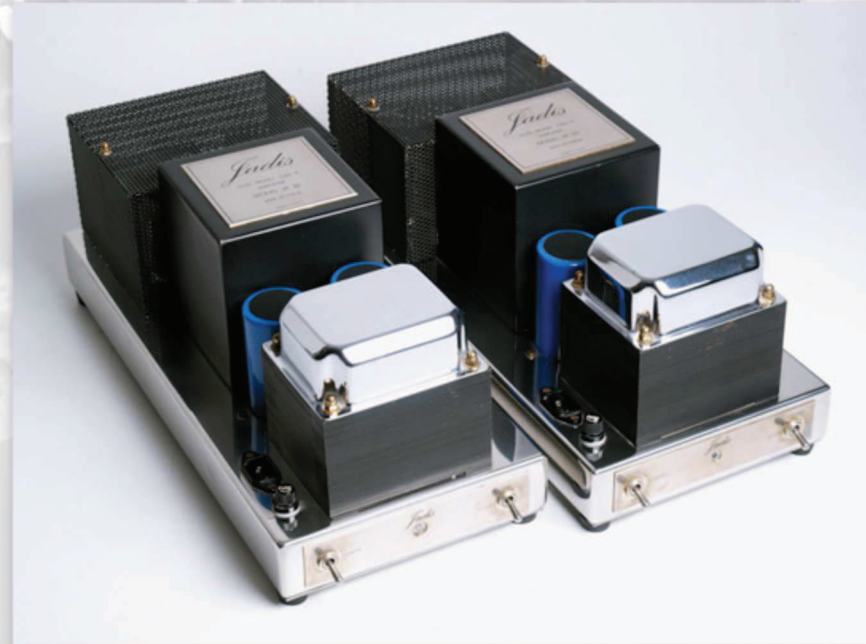
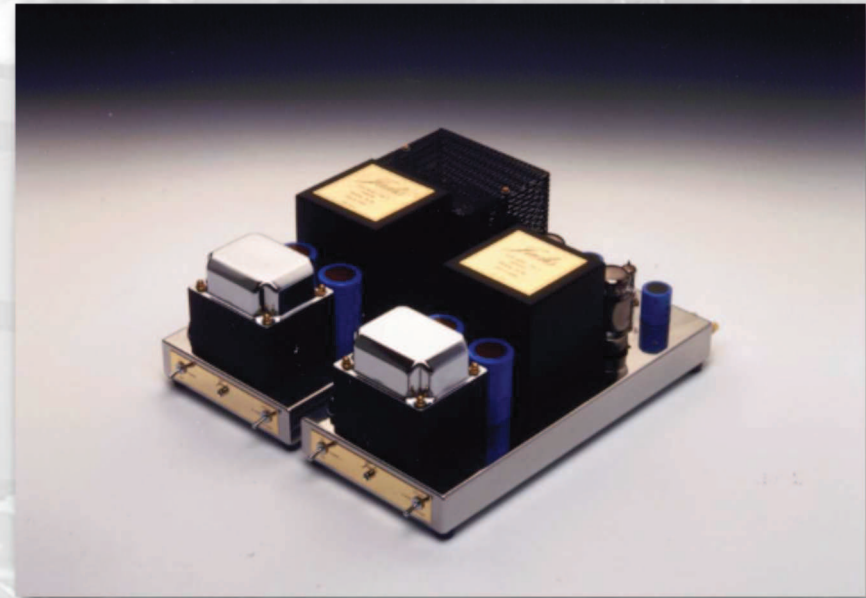
Description

The JA30, a pure class A 30 watt per side amplifier is a very effective monoblock. The MkII version brings the compatibility with the new KT150 pentode tubes and increase the power output to 50 watt per channel. Each tube is protected by a fuse and is self-biasing. Output tubes can be either 6550s, KT88s, KT90s or KT120 and KT150 and the amps are designed to deliver full power at 15Hz, allowing an extraordinary bass range.

Listening

The Jadis JA-30, not only are they emotionally engaging, they can also pack some punch. They are pure emotion machines...

<http://www.hifi-advice.com>



Jadis JA80MkII

Specification

Type	Monoblock power amplifier
Bias	Autobias
Bandwidth	@30W @0dB 20Hz to 35kHz @30W @-3dB 15Hz to 100kHz
Load impedance	1 to 16 Ω
Power output	60W pure class-A up to 90W with KT150
THD @50W	0.6%
Input sensitivity	770mV
input impedance	>100K Ω
Number of block	2
Tubes	8 x KT88/KT90/KT120/6550, 2 x ECC82, 2 x ECC83
Dimensions	62.5x26x24 cm
Consumption	190W each
Weight	35kg each

Description

The Jadis JA-80 is one of the most well known and popular amplifiers of the Jadis line. This is the first amplifier that was created by Jadis and like essentially all Jadis products, the JA80 has been refined and improved over the years and is still produced today. It is now at the MkII version which brings the compatibility with new KT150 pentode tubes.

Listening

Jadis JA80's performance from the upper bass to the mid treble can be described as eminently musical. It has a real beauty of tonal rendering coupled with fine inner dynamics, achieved without any exaggeration of drive or presentation. The midrange was liquid, exceptionally relaxed, yet reproduced with first-rate transient and harmonic definition.



Jadis JA120

Specification

Type	Monoblock power amplifier
Bias	Autobias
Load impedance	1 to 16 Ω
Power output	100W pure class-A
Input sensitivity	560mV
input impedance	>100K Ω
Number of block	2
Tubes	12 x KT88/KT90/KT120/6550, 2 x ECC83, 4 x ECC82
Dimensions	68x30x29 cm
Consumption	250W each
Weight	45kg each

Description

Released in 2013, the new JA120 builds on Jadis' tradition of combining fine hand craftsmanship with state-of-the-art innovation and sumptuous design. The JA120 benefits from several important enhancements and raises the bar with no-compromise performance.

Listening

Warm and weighty, the JA120s stay just the right side of overly kind or romantic, never robbing a lip of its curl or a snarl of its spit and attitude.

"you'll find no better or more tractable tool than the JA120. Big, heavy and pricey it may be, but it has power to spare and musical authority to burn. The trick is to deliver that, but to master subtlety and delicacy too - and that's where the 120s really score."

- Roy Gregory, *"HiFi+"*, November 2012



Jadis JA200MkII

Specification

Type	Monoblock power amplifier with separated power supply
Bias	Automatic
Load impedance	1 to 16 Ω
Power output	160W pure class-A
Input sensitivity	775mV
input impedance	>100K Ω
Number of block	4
Tubes	20 x KT150,EL34/KT88/KT90/6650, 2 x ECC82, 2 x ECC83
Dimensions	68x30x29 cm
Consumption	500W each
Weight	125kg

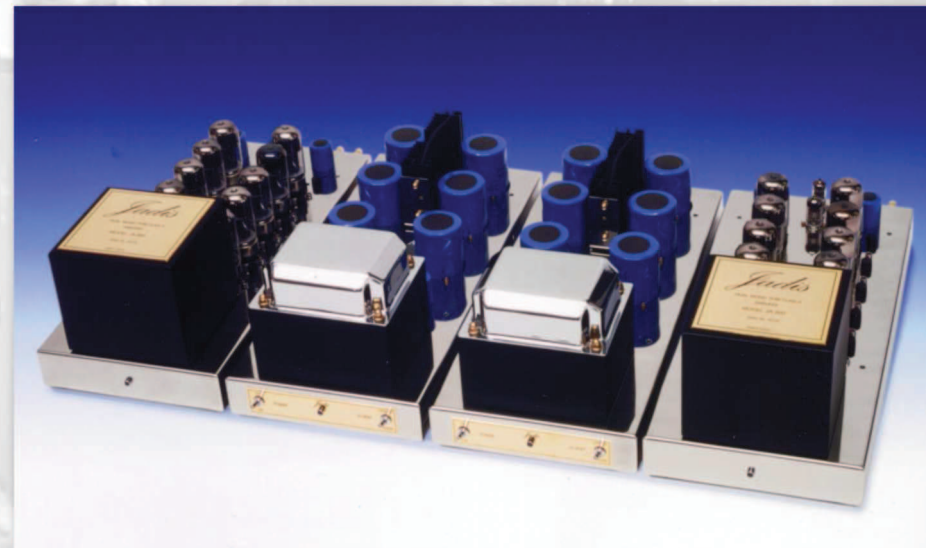
Description

The JA200 will take you where very few have gone before; 160 watts of pure class A power. This four box set of ultimate musicality features two mono-block amplifiers each with its own separate power supply. Probably the last amp you'll ever buy... The MkII version bring the compatibility with KT150.

Listening

The most important and obvious characteristic of this equipment is the sensation that more information is coming through from the source to my ears. And when I say "more information," I mean significantly more information, whether we're talking top-to-bottom frequency response, transient response, dynamics, image width/depth, low-level information retrieval, whatever. In addition to more information, it seems to me that I'm hearing better information in terms of its neutrality, transparency, timbre, instrumental color....

Darryl G. Lindberg



Jadis JA500

Specification

Type	Monoblock power amplifier with separated power supply
Bias	Manual
Bandwidth @- 3dB	15Hz to 35kHz
Load impedance	1 to 16 Ω
Power output	350W class-AB
Input sensitivity	710mV
input impedance	>100K Ω
Number of block	4
Tubes	24 x KT90/KT120, 6 x ECC82, 2 x ECC83, 4 x EF86
Dimensions	80x35.5x26 cm
Consumption	1000W per channel
Weight	240kg

Description

Flagship power amplifier. The JA500 is made of 4 blocks: two for power supply and two for amplification, it has the same number of tubes as the JA800 had but has improvements in reliability and ease of set up. These power amplifiers can deliver a mind-blowing 350 watts in AB class.

Listening

The JA500 will bring you where only few power amplifiers may pretend to. Despite its massive power capability the Jadis JA500 remain highly musical. This state of the art tube power amplifier is able to handle any kind of speaker, even those that are really demanding. The sentence that describe the best these units is: "an iron fist in a velvet glove".



Jadis Se300b

Specification

Type	Triode single ended monoblock amplifier
Bias	Autobias
Load impedance	1 to 16 Ω
Puissance	10W class-A
Input sensitivity	450mV
input impedance	>100k Ω
Feedback ratio	0dB
Number of block	2
Tubes	4 x 300B, 4 x 5R4, 2 x 6SN7
Dimensions	20.3x22.9x53.1 cm
Consumption	140W each
Weight	29.5kg

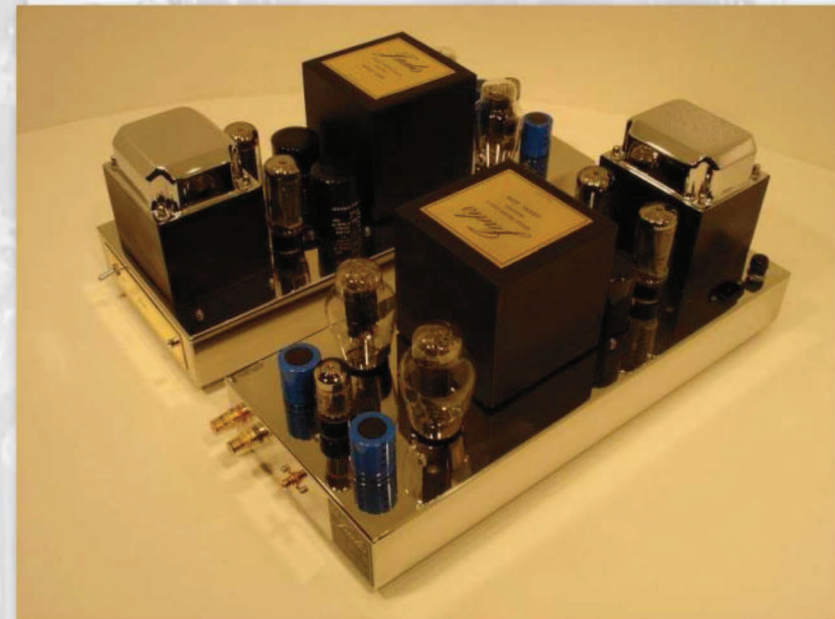
Description

The SE300B delivers 10W RMS in pure class-A with single-ended mounting (the two tubes are in parallel). There is absolutely no feedback in the bandwidth @-3dB from 20Hz to 20kHz. The driver stage, powered at 400V, is built around a double-triode 6SN7 and the two elements of the tube are mounted in cascade. The output stage is powered at 320V, allowing the tubes to give their maximum potential.

Listening

There is one thing that generally speaking, 300B-based amplifiers do so well: they breathe life into the music. But the Jadis amplifiers breathe more than life into the music; they impart light as well. This is how I would define ultimate transparency

Jonathan Scull Sam Tellig "Stereophile"



Jadis Se845

Specification

Type	Triode single ended monoblock
Bias	Autobias
Load impedance	1 to 16 Ω
Power output	20W class-A
Input sensitivity	500mV
input impedance	>100K Ω
Feedback ratio	0dB
Number of block	2
Tubes	2 x 845, x2 6NS7, 2 x ECC83
Dimensions	65x30x24 cm
Consumption	200W per unit
Weight	35kg each

Description

The SE 845 was designed in response to the demands for natural and dynamic musicality. The technical choices for this amplifier have been made with this requirement in mind. For the 845 triode to be effective, it needs an incoming signal of high amplitude under low impedance : The ECC 83 double triode ensures the gain in tension, while the 6SN7 ensures the impedance adaptation between the driver stage and the power stage.

Listening

"an immense crushing breadth, a grandiose sound image which extends way beyond the bounds of the speakers and even of the listening room..."

Alexandre Geoffroy.



Jadis Se845nec

Specification

Type	Push/Pull 845 monoblock amplifier
Bias	Autobias
Load impedance	1 to 16 Ω
Power output	40W class-A
Input sensitivity	560mV
input impedance	>100K Ω
Feedback ratio	0dB
Number of block	2
Tubes	4 x 845, 4 x EL84, 2 x ECC82, 2 x ECC83
Dimensions	68x30x29 cm
Consumption	250W per unit
Weight	45kg each



Description

The SE845NEC provides 40W per channel in pure class A using 1 ECC83, 1 ECC82, 2 EL84 and 2 single ended 845 per channel. The 845 push-pull brings twice more power than the SE845 while keeping details and musicality.

Listening

When we last visited France we heard those mono amps, which sounded so good that we are certain they represent without a doubt the very top of this application.

"Absolute Sounds ltd"



Jadis

Preamplifiers



Jadis Pré1

Specification

Type	Stereo line preamplifier (Balanced or single-ended)
Gain	14 dB
Input	3 (Balanced) / 5 (Single-ended) line input. 1st input is switchable between 14 and 11dB.
Bandwidth @-0dB	10Hz to 30 kHz
Number of block	1
Tubes	6 x ECC83 (balanced) 6 x EF86 (single-ended)
Dimensions	46x35.5x20 cm
Consumption	60VA
Weight	15 kg

Description

The Pré1 is the brand new line stéréo preamplifier from Jadis. It is a perfect match with the also newly developed PA100 power amplifier. This preamplifier is available in either fully balanced or single ended version. The design clearly shows that this unit was developed in the pure Jadis tradition of building quality and musicality.

Listening

The listening of these electronics are to be remembered as one of the best we were given to listen to. Even if Jadis uses pentodes instead of tetrodes as usually found in their preamplifiers, it was in order to get more definition and musicality. Extremely musical and vivid with an impressive tonal accuracy and punch. No need to focus to unscramble the message as it gets your attention by its communicative realism.

"Stereo Prestige et Image" December 2014



Jadis DPMC MkII

Specification

Type	Phono MM/MC
Gain	66 dB
Input	1 MC/MM : 48K Ω , 1K Ω , 300 Ω , 100 Ω
Output	From 0 to 5V variable output
Number of block	1
Tubes	4 x ECC83, 1 x EL84, 1 x EF86
Dimensions	45.5x32x12.5 cm
Consumption	30W
Weight	11 kg

Description

The DPMC is an MM/MC phono preamplifier with a level control. It uses 4 ECC83 for the preamp and for the RIAA correction. Tube regulated power supply ensures stability of this unit. The MkII version feature a new internal layout for better isolation and also allows the input impedance to be switched between 48K Ω , 1K Ω , 300 Ω , 100 Ω for a better match with your cartridge. This unit is ideal to equip an integrated amplifier with a state-of-the-art phono stage that will allow you to rediscover your records collection.

Listening

The DPMC delivered plenty of virtues [...]. The DPMC sounded really seductive. Think enhanced spatial perspective, and fatter, richer, and more liquid textures. The Jadis DPMC's tube signature us unmistakable. It romances the soul, and I for one could not resist its siren call. [...] It celebrates the music with



Jadis JP15

Specification

Type	Stereo line preamplifier
Gain	23 dB
Input	6 line, 1 monitoring outup
Bandwidth @-3dB	15Hz - 100 kHz
Input impedance	47K Ω
Input sensitivity	150mV
Number of block	1
Tubes	1 x ECC82, 1 x ECC83
Dimensions	44 x 29 x 12.5 cm
Weight	15 Kg
Consumption	20 W

Description

The Jadis JP-15 stereo preamplifier makes a perfect and homogenous couple with the monoblock Jadis JA-15 amplifiers. On this model the plates are made of varnished and screen printed brass. Its design is in the pure Jadis' tradition. With a simple diagram this preamplifier will really breathe life into your music.

Listening

The JP15 delivers a wonderful sound, dynamic with a deep and wide soundstage. Homogeneous on the whole music spectrum, it transports any parts of the harmonics with a constant fluidity and a disconcerting ease. "Elegant" is the word that fits the best this jadis.



Jadis JP80MC

Specification

Type	Stereo line /MM /MC preamplifier with separated power supply
Gain	20dB(line)/57dB(MM)/84dB(MC)@1KHz
Input	4 line, 1 MM, 1 MC, 1 tape monitor
Bandwidth @-3dB	20Hz to 50 KHz (line) RIAA (phono)
Input impedance	100k Ω
Input sensitivity	MM 1.8mV / MC 200 μ V / Line 120 mV
Number of block	1
Tubes	2 x ECC88, 6 x ECC83, 1 x EF86, 1 x EL84
Dimensions	43 x 34.5 x 17.5 cm
Weight	30 Kg
Consumption	65 W

Description

The Jadis JP80MC is the most well known preamplifier made by Jadis. Built with 4 line, 1 MM and 1 MC inputs the JP80MC will allow you to connect any analog sources you might want to use. The phono stage will accept all type of cartridges even the ones with a very low impedance. Also, the power supply is over sized and separated in order to preserve the fragile audio signal. Enormous technical effort were made to develop this piece of equipment and these efforts had only one purpose: the ambition of building the best preamplifier in the world.

Listening

The JP80MC is one of the great preamplifiers, it never ceases to amaze its listener with the punch and sound beauty it delivers. We have decided to give this JP80MC the highest award of the site: "5 stars - State of the Art", for its exceptional musicality.

"<http://www.thresholdlovers.com>"



Jadis JP200MC

Specification

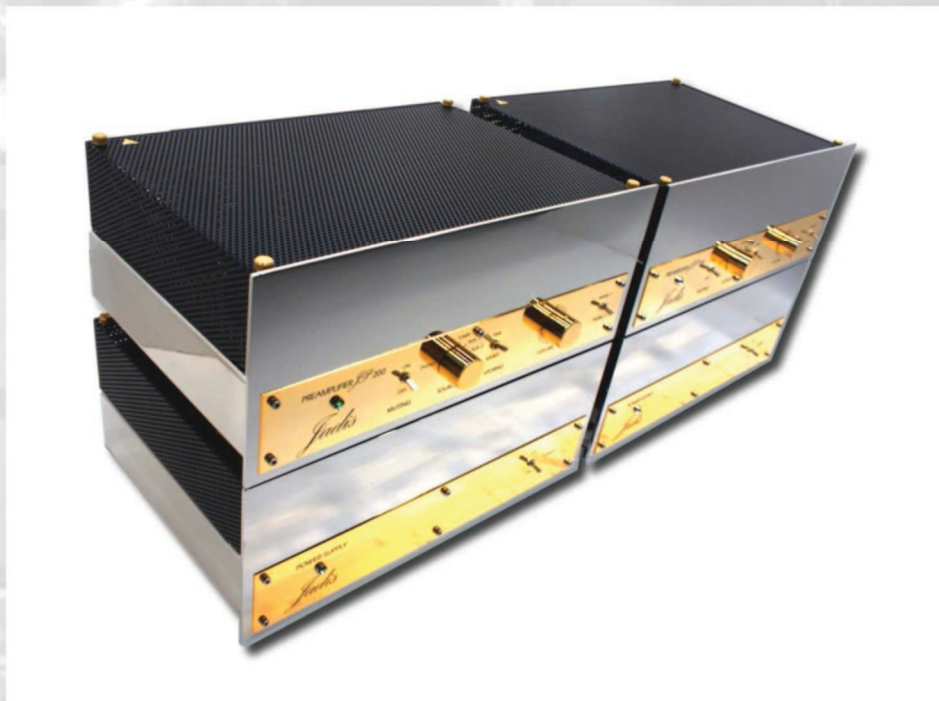
Type	Dual mono line/MM/MC preamplifier with separated power supply
Gain	25dB(line)/59dB(MM)/66dB(MC)@1KHz
Input	4 line, 1 MM, 1 MC, 1 tape monitor
Bandwidth @-3dB	20Hz - 50 (line) RIAA (phono)
Input impedance	100K Ω Line / 47.8K Ω MM / 100 Ω MC
Input sensitivity	MM 1.8mV / MC 200 μ V / Line 120 mV
Number of block	4
Tubes	6 x ECC83, 2 x 6922 Power supply 2 x EF86, 2 x EL84
Dimensions	43 x 34.5 x 17.5 cm
Weight	60 Kg
Consumption	74 W

Description

Built with 4 line, 1 MM and 1 MC input the JP200MC will allow you to connect all the analog sources you might want to use. The phono stage will accept any cartridges even the ones with a very low impedance. Moreover this is a 4 blocks unit, with separated and oversized power supply and a switch that allows the user to switch the phase to his convenience. The JP200MC include all the ingredients that make an exceptionally great sounding preamplifier.

Listening

The JA200MC is the most advanced line/MM/MC preamplifier currently produced by Jadis. The sound of this preamp is so liquid and natural with a sense of ease that just cannot be described.



Jadis JP500

Specification

Type	Dual mono line preamplifier with separated power supply
Gain	20dB
Input	6 line, 1 tape monitor, 2 Z adapter
Bandwidth @-3dB	15Hz - 27 KHz (line) RIAA (phono)
Input impedance	100K Ω Line
Input sensitivity	120 mV
Number of block	4
Tubes	2 x ECC83, 6 x ECC82, 4 x EL84 Power supply 2 x EF86, 2 x EL84
Dimensions	43 x 34.5 x 17.5 cm
Weight	62 Kg
Consumption	250 W per channel

Description

The ultimate expression of the art. Line preamplifier with output transformers. The JP500 is an absolutely no compromises unit at the service of music reproduction. Built-in balanced and unbalanced capability. 14dB of gain, 6 line inputs, 2 outputs. Bandwidth 20 Hz - 50kHz. Tube complement: 6 ECC82, 2 ECC83, 2 EF86, 6 EL84. A switch allows the user to change the absolute phase to his convenience.

Listening

As it can be expected by its look and specifications, the Jadis JP500 sounds absolutely fabulous. It significantly improves any system it is connected to, giving the best from the sources and to the power amplifier. The JP500 is with no doubt the culmination of the quest for perfection.



Jadis JPL

Specification

Type	Stereo line preamplifier
Gain	23dB(CDstage)/25dB(Line)
Input	4 line, 1 tape monitor
Bandwidth @-3dB	20Hz-70KHz
Input impedance	1M Ω (CDstage)/100K Ω (Line)
Tubes list	1 x ECC82, 3 x ECC83
Dimensions	43 x 29 x 17 cm
Weight	15 Kg
Consumption	25 W

Description

Built-in stereo preamplifier, the JPL includes 5 line inputs and one tape with monitoring.

Listening

The JPL will bring you an inherent sense of dynamic gradation, but also soundstage transparency and mastery over the elements of spatial resolution.

I never felt that the Jadis was holding back or blunting the power and rise-time of orchestral peaks. I've never heard a preamp so convincingly delineate the dynamic range from soft to very loud.

This is one of those rare products guaranteed to dramatically improve your system. Be prepared for a dynamic eruption that will nudge you much closer to the illusion of live music.

<http://www.stereophile.com>



Jadis JPS2

Specification

Type	Line preamplifier with separated power supply
Gain	18dB(CDstage)/24dB(Line)
Inputs	6 line, 1 tape monitoring
Bandwidth @-3dB	20Hz-74KHz
Number of block	2
Tubes	1 x ECC82, 3 x ECC83, 1 x EF86, 1 x EL84
Dimensions	430 x 345 x 175 mm each
Poids	31Kg
Consommation	49W



Description

The Jadis JPS2 is a line preamplifier which uses 3 ECC83 for the line function plus a ECC82 tube to adapt the impedance on the CD entry. Its specific power supply recreates a voltage for the module with a 80 Hz frequency in order to avoid problems that may occur due to the 50 or 60 Hz frequency from the main supply.

The high voltage is regulated by two tubes: 1 x EF86 and 1 x EL84.

Listening

Impressively wide soundstage, it feels like pushing the walls, everything becomes clearer, easier. holographic! The build quality is superb and reliability is recognized by all. This preamplifier is clearly a reference among the best.

Cf. essai "Haute Fidélité" n° 165 April 2011



Jadis JPS3

Specification

Type	MM/MC with separated power supply
Gain	57dB(MM)/84dB(MC)
Input type	1 MM / 1 MC
Bandwidth	RIAA
Number of block	2
Tubes	2 x ECC88, 3 x ECC83, 1 x EF86, 1 x EL84
Dimensions	43 x 34.5 x 17.5 cm each
Poids	30Kg
Consommation	60W

Description

Phono preamplifier with separated power supply.

This Jadis includes an MM and MC phono preamplifier that uses three ECC83 for MM and 2 6DJ8 for the MC stage.

As for the JPS2, its specific power supply recreates a voltage for the module with a 80 Hz frequency in order to avoid problems that may occur due to the 50 or 60 Hz frequency from the main supply. The high voltage is regulated by two tubes: 1 x EF86 and 1 x EL84.

Listening

The Jadis JPS3 is the phono preamplifier that will let you touch the full capability of the vinyl discs and give you the best of this analog source. Every single subtlety from the grooves will be perfectly transcribed for a greater listening pleasure.



Jadis

Sources



Jadis Thalie

Specification

The Jadis Thalie was developed without compromise with three main ideas.

- 1)the highest possible level of reliability,
- 2)the best sound quality,
- 3)...and that this turntable, born from passion, makes you dream

Wonderful piece of artisan work, the Thalie was developed in cooperation with Pierre Riffaud, a well known protagonist in the world of exceptional turntables.

This state-of-the-art unit combines together massive weight and high precision work. About 80Kgs for the whole system, the plate is 20Kgs, making this turntable vibration free. The base is made out of a really heavy granit type extracted from the town of Lacrouzette in Southern France.

This turntable is fully mechanical, not a single electronic circuitry is used.

The uni-pivot tonearm was developed in house with the same standards as the turntable: compromise-free and extremely high precision.

Weight : 80Kg

Dimensions : 68x58x29cm



Jadis Calliope

Specification

Type	Compact disc player
Number of block	2
Output	S/PDIF, AES, ST and Jadis Dig signal - 16bit/44.1KHz - 24bit/96KHz
Dimensions	450X480X230mm
Mecanism	CDM12 Pro II
weight	50Kg
Consumption	65W
Power supply	6 stabilysed independent allimentations with two power transformers.

Jadis Calliope uses a sub-chassis decoupling for CD drives that was developed by the father of Jadis and first implemented on the famous JD1.

With the Calliope, Jadis went even further... Individual components are decoupled from each other. Moreover, the drive is protected from mechanical and electrical undesired effects. There is no doubt that the Calliope is taking the most of the CD technology.

Analytical precision, rigorous tempo, truthful timbres combined with high precision, expectional carftskill and unforgettable design, the Calliope was developed to extract the most or your favorite compact discs and to bring emotion during listening sessions.



Jadis Orphée

Specification

Type	Compact disc player
Tubes	4 x ECC82, 1 x EF86, 1 x EL86
Output(connector)	S/PDIF(RCA), AES/EBU(XLR), Optical (ST) - 24bit/96KHz
Digital input	USB
Dimensions	45.5X12.5X45.0cm
Mecanism	CDM12 Pro II
Weight	17Kg
Consumption	60W
Power supply:	- Independent power supply for each functions - Tube High voltage regulation for the output stage.

Jadis Orphée offers in one unit a state-of-the-art tube CD player with an integrated analogue to digital converter that is usable by the USB connector on the back of the unit. The 24-bit converter, the symmetric tube output as well as the tube power supply were inspired by the famous Jadis JS1 which guarantee a great musicality.

Jadis Orphée aesthetic and highly seductive sound are unique on the market. The tube tradition makes a really good mix with the digital technology. Highly musical with plenty of authenticity as one can expect from a Jadis gear. The Orphée shows that it is still possible to highly appreciate our little silvered discs.

"Haute Fidélité" April 2015



Jadis JS1 MkIV

Specification

Type	Tubes Digital to Analog Converter with separated power supply
Sampling	24bits/96KHz up to 24bits/192KHz (USB HD) <i>USB HD option compatible with :</i> <i>Windows XP, Vista, 7, 8, 10 / Mac OSX 10.6 or above</i>
Bandwidth	1Hz to 50KHz
Signal/Noise ratio	100dB
Number of block	2
Input	4 Digital - S/PDIF on Coaxial - AES/EBU on XLR - Optical AT/T - USB (B type) (24bits/44kHz without usb HD option and 24Bits/192kHz with usb HD)
Output	Single ended RCA & Balanced XLR
Tubes	2 x ECC82, 2 x ECC88, 1x EL86, 1 x EF86
Dimensions	45.5x32.5x12.5cm each
Weight	30Kg
Consumption	75W

The Jadis JS1 was developed with one main objective : Making the best and most musical reference tube DAC available.

The power and the grounding of the digital section is totally independent from the one of the analog part of the circuit.

Moreover, the conversion from digital to analog is made through a delta/sigma processing which allow a minimum quantification noise.

This converter gives a superbly large soundstage with a warm yet very dynamic sound. It emphasis the majestic appearance of reproduction and musicality.



Jadis JS2 MkIII

Specification

Type	Tubes Digital to Analog Converter
Sampling	24bits/96KHz
Bandwidth	20hz to 20KHz
Signal/Noise ratio	100dB
Number of block	1
Input	4 Digital - SPDIF on Coaxial - AES/EBU on XLR - Optical on ST - USB (B type) (24bits/44kHz)
Output	Single ended RCA & Balanced XLR
Tubes	4 x ECC82
Dimensions	45.5x32.5x12.5cm
Weight	15Kg
Consumption	22W

The Jadis Digital Analog Converter JS2 MKIII brings some improvement such as an USB input and balanced XLR output. The USB connector allow the Jadis JS2 MKIII to be easily recognized by any computer without particular driver installation.

Just like the Jadis JS1, we use a completely symmetrical processing for the digital part and for the analog signal as well which allows a more effective noise suppression.

This JS2 gives a typical analog sound, warm but very dynamic with plenty of details.





Jadis

www.jadis-electronics.com

jadis@jadis-electronics.com

+33 468 786 330



Jadis.

www.jadis-electronics.com
jadis@jadis-electronics.com
+33 468 786 330